

BIG MEADOWS WAYSIDE

Good Morning!

ASSORTED CHILLED JUICES	\$ 1.75
SELECTION OF COLD CEREALS	\$ 2.50
Add Seasonal Berries	\$1.25
HOT CEREAL	\$ 3.50
Oatmeal with Raisins and Brown Sugar or Wildflower Honey	

- WAYSIDE BREAKFASTS -

HEALTHY HIKER*	\$ 7.25
Scrambled Eggbeaters, Served with Breakfast Potatoes, Turkey Bacon Choice of Toast or English Muffin	
CINNAMON FRENCH TOAST*	\$ 4.95
Griddled, Egg Battered Texas Toast Maple or Blackberry Syrup Add Warm Apple Cinnamon Compote Topping	\$ 1.95
OLD VIRGINIAN BREAKFAST*	\$ 7.95
Two Farm Fresh Eggs Any Style, Served with Country Ham, Breakfast Potatoes or Grits, Toast or Biscuit	
BLUE RIDGE BREAKFAST*	\$ 7.25
Two Eggs Any Style, Served with Your Choice of Bacon, Sausage or Smoked Ham, Breakfast Potatoes and Toast	
BISCUITS AND GRAVY*	\$ 5.95
Two Flaky Buttermilk Biscuits Topped with Country Sausage Gravy	
TANNER'S RIDGE BREAKFAST SANDWICH*	\$ 2.25
Country Fresh Egg on Your Choice of Buttermilk Biscuit or English Muffin	
With Cheese	\$ 2.55
With Choice of Bacon, Sausage or Ham	\$ 3.75
With Cheese and Meat	\$ 3.95

*Eggbeaters available upon request.
We use non-cholesterol oil in frying. Margarine available upon request.*

- FROM THE GRIDDLE -

BUTTERMILK OF BUCKWHEAT HOT CAKES
Tall Stack **\$ 5.50** Short Stack **\$ 4.95**

*Served with whipped butter and choice of maple or blackberry syrup
Add blueberries, strawberries or warm apple topping to any of the following \$ 1.75*

~ SIDES ~

Sausage	\$ 3.95	Cinnamon Roll	\$ 2.50
Apple Smoked Bacon	\$ 3.95	Bagel with Cream Cheese	\$ 2.95
Turkey Bacon	\$ 2.95	Toast with Butter & Jelly	\$ 1.95
Smoked Ham	\$ 3.95	English Muffin with Butter & Jelly	\$ 1.95
Grilled Country Ham	\$ 4.95	1 Egg	\$ 1.95
Breakfast Potatoes	\$ 1.95	2 Eggs	\$ 2.55
Grits	\$ 1.95		

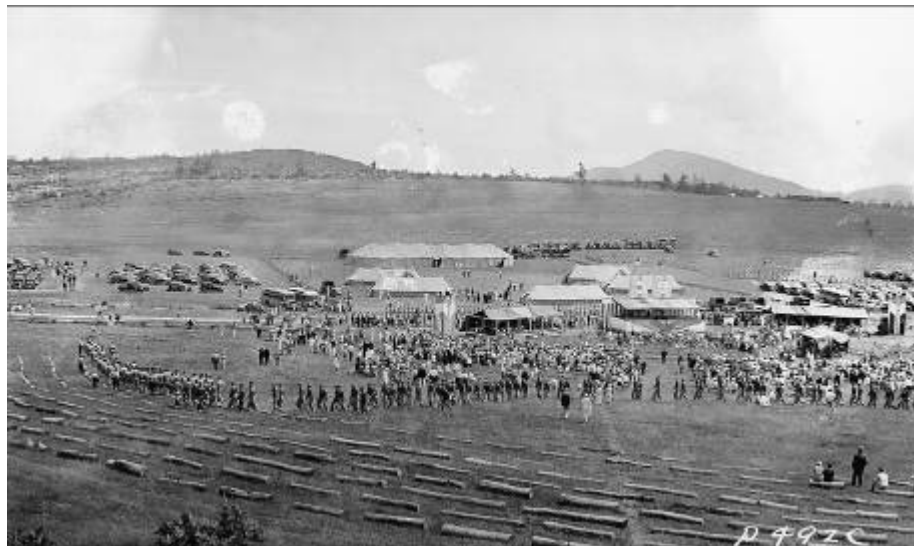
~ BEVERAGES ~

Hot Chocolate	\$ 1.95	Chocolate Milk	\$ 1.95
Milk - 2%	\$ 1.75	Hot Tea	\$ 1.75
Herbal Tea	\$ 1.95	Chilled Apple Cider	\$ 2.25
Iced Tea	\$ 1.95	Soda	\$ 1.95
Cappuccino	\$ 2.95		\$ 1.95

WE PROUDLY BREW STARBUCKS ORGANIC COFFEE \$2.00
Regular or Decaffeinated



Big Meadows Wayside circa 1940's



Shenandoah National Park Dedication in the Big Meadows Area - July 3, 1936